

Commercial Vehicle Enforcement

NORTHWEST SECTOR:

Details:

- 11/18 – Four Inspectors screened 211 commercial motor vehicles at the I 89 Williston SB rest area detail. 19 inspections were conducted. 16 vehicle violations were detected. 1 vehicle was placed out of service.
- 11/19 – Four Inspectors screened 278 commercial motor vehicles at the I 89 Williston NB rest area detail. 15 inspections were conducted (3 supervised cargo tank). 22 vehicle violations were detected. 2 vehicles placed out of service.
- 11/21 – Four Inspectors screened 48 commercial motor vehicles at the US Rte 7 Ferrisburgh pull off detail. 8 inspections were conducted. 10 vehicle violations were detected. 3 vehicles placed out of service.

Crashes:

Notables:

- 11/18 – Insp. inspected a tractor trailer hauling logs at the I 89 Williston SB rest area detail. The inspection revealed the combination was 9,000 pounds over their 99,000 permitted weight. An overweight ticket was issued.



- 11/18 – Cpl. inspected a tractor trailer combination at the I 89 Williston SB rest area detail. The inspection revealed a heavy machine scoop was secured improperly as it weighed more than 2500 pounds and was only secured with 1 chain and binder. Additionally, loose dunnage was present on the trailer. The trailer was placed out of service for the infractions.



- 11/18 – Insp stopped a truck hauling a trailer for an equipment violation. A license check revealed the operator was criminally suspended. The driver was cited for DLS offense, and the combination was grounded until the emergency breakaway device on the trailer was repaired.
- 11/19 – Insp. inspected an interstate truck hauling a trailer at the I 89 Williston NB rest area detail. The inspection revealed the battery was missing from the emergency break away system rendering it inoperative. The trailer was placed out of service for the violation.



- 11/19 – Insp. inspected a tractor trailer combination hauling logs at the I 89 Williston NB rest area detail. The inspection revealed the combination weighed 6,000lbs over their permitted 99,000 limit and multiple straps securing the logs to the trailer were defective due to damage. The carrier was ticketed for the overweight infraction and the trailer was placed out of service due to the load securement violations.



- 11/19 – Cpl. inspected a truck tractor hauling a cargo tank at the I 89 Williston NB rest area detail. The inspection revealed the service glad hand hose was damaged and the inner fabric ply was frayed. The combination was placed out of service for the defect.



- 11/20 – Cpl. inspected a tractor trailer combination hauling heavy machinery at the I 89 Williston NB rest area detail. The inspection revealed a heavy machine scoop was being transported in the bed of a tracked vehicle and the scoop was not secured at all. The trailer was placed out of service until the load securement violation was remedied.



- 11/20 – Insp. stopped a tractor trailer combination on I 89 in the Chittenden County safety corridor for significant amounts of smoke pouring out of the engine bay and left side of the truck tractor. Further investigation revealed the engine was spewing oil all over the left front steer and brake components. Moments later, the engine failed and had to be towed off the interstate. The inspection revealed 20% of the service brakes were defective on the combination, an air leak was present at other than a proper connection, tires were defective, and a primary air bag was detached and deflated on the trailer. The combination and trailer were placed out of service for repair.



- 11/20 - Insp. responded to VT Rte. 62 in Berlin to assist Berlin PD with a tractor trailer combination that made an improper U-turn and ruptured its fuel tank which leaked diesel fuel all

over the roadway. A Hazmat cleanup was initiated. The combination was inspected, and the truck tractor was placed out of service for the fuel leak. The Berlin police department issued tickets.



- 11/21 – Insp. inspected a tractor trailer combination hauling heavy machinery at the US Rte. 7 Ferrisburgh pull off detail. The inspection revealed one of the heavy machines was not secured properly at all 4 corners and the pneumatic arm was not secured to the deck. The trailer was placed out of service and the driver was educated on proper load securement procedures.



- 11/21 – Insp. inspected a tractor trailer combination at the US Rte. 7 pull off detail. The inspection revealed a pallet of materials weighing more than 1100 pounds was not secured properly on the flatbed trailer. Additionally, the carriers IFTA permit was suspended. The combination was placed out of service and the carrier was ticketed for the IFTA infraction.



- 11/21 – Cpl. inspected a tractor trailer combination at the US Rte. 7 pull off detail. The inspection revealed the rearmost stop lamps, and the rearmost left turn signal were inoperative on the combination. The trailer was placed out of service for the defects.
- 11/22 – Insp. stopped a truck hauling a trailer for a registration violation in South Burlington. An inspection was conducted, and the driver was recording hours of service using an electronic logbook but not a required ELD device. The driver advised he is normally outside of the 150-air mile radius. Additionally, the emergency brake away device was not hooked up to the towing vehicle. The driver and trailer were both placed out of service. A ticket was issued.



Passenger Vehicle: Nothing to report.

Safety Audit:

NORTHEAST SECTOR:

Details:

- 11/18 Northeast sector Inspectors joined the South sector at the Hartford southbound detail.

Crashes:

Notables:

- 11/19 Lunenburg, Inspector stopped a commercial motor vehicle for a marking violation, the combination was found to be engaged in Interstate commerce and did not have a USDOT registration number assigned to the company. The vehicle was placed out of service for an inoperable parking brake.
- 11/19 Victor, Inspector stopped an oversized load for not displaying signs or flags, the carrier was found to not have the required permit to haul an oversized load. The combination was grounded until a permit was obtained.
- 11/19 Hartford, Inspector conducted a level 2 inspection on a commercial vehicle and located a chafed glad hand hose that was chafed through the inner reinforcement ply and the ply was frayed.



- 11/19 Lunenburg, Inspector conducted a level 2 inspection on a commercial vehicle and located a cracked frame in the radius supporting the suspension where it mounts to the frame.



New Entrant:

Compliance Review:

Passenger Vehicles: Nothing to report

SOUTH SECTOR:

Details:

- 11/18, Hartford SB; 11 Inspectors screened 253 commercial vehicles and completed 25 inspections (3 Supervised HM) resulting in 2 driver and 18 vehicle violations; 4 vehicles were placed out of service. Additionally, 4 oversize/overweight permits were checked, and two CVSA decals were issued.
- 11/19, Hartford SB; 8 Inspectors screened 171 commercial vehicles and completed 27 inspections (5 Supervised, 1 HM) resulting in 4 driver and 18 vehicle violations; 2 drivers and 6 vehicles were placed out of service. One CVSA decal was issued, and one portable weigh was completed.



- 11/21, Fair Haven; 7 Inspectors screened 144 vehicles and completed 26 inspections (4 Supervised, 1 HM) resulting in 8 vehicle violations; Additionally, two overweight permits were checked, and one ticket was issued, in the amount of \$674.00 for an overweight violation.



Crashes:

Notables:

- 11/18, Hartford SB Rest Area, Cpl. discovered an emergency breakaway cable that was broken and not attached to the towing vehicle. The combination was placed out of service until repaired.



- 11/18, Hartford, Cpl. inspected a 2-axle interstate vehicle and found Hours-of-Service violations and a steer tire with less than $2/32$ " tread depth in two adjacent tread grooves at multiple locations around the tire. The truck was placed out of service for tires.



- 11/19, Hartford, Cpl. discovered a reservoir air tank with broken flanges securing the tank to the trailer, as well as three trailer brakes out of adjustment and a dual set tire with less than $1/32$ ". Although the air reservoir tank movement did not meet the out of service criteria, the combination was placed out of service for greater than 20% defective brakes.



- 11/19, Hartford, Cpl. placed a driver out of service for not having the proper class of license for the load being transported. A portable weigh was completed on the 4-axle combination loaded with three motor vehicles and was found to be 27,900 lbs.; The driver possessed only a class D License when a Class A was required. The driver off-loaded one vehicle to bring the weight of the load under 26,001 lbs. and continued transport.



- 11/19, White River Junction, Inspector conducted a level 1 inspection on a Tractor Trailer. During the inspection it was found that there was an active leak on axle 3 passenger side wheel. The vehicle was placed out of service until repairs were made.



- 11/20, White River Junction, Inspector conducted a Level 5 inspection on a school bus. The inspection revealed a brake in full defect. This caused a violation of the 20% brake rule thereby placing the bus out of service.

- 11/21, Fair Haven Scale House, Inspector observed a log truck that appeared to be heavy. Once on the scales it showed the truck to weigh 109820. A VCVC was issued for the violation.



Passenger Vehicle: Nothing to report

Traffic Enforcement Unit:

Crashes: Nothing to report

Notables:

- 11/18--Cpl stopped a truck and trailer in interstate commerce for a marking violation. The truck was placed out of service as the parking brake was inoperable.



- 11/18--Cpl stopped the driver of a box truck in interstate commerce for speeding. The driver was placed out of service as he was using another drivers ELD because he didn't have his own record of duty status. The other person was the passenger and admitted that he let him use his ELD as the driver didn't have any logs.



- 11/19--Cpl stopped the driver of a tractor trailer for speeding. The truck tractor was placed out of service as both axle 1 tires made contact with other vehicle parts when the wheels were turned.



- 11/19--Cpl stopped a tractor trailer for an equipment violation. The trailer was placed out of service as the passenger side rear turn signal was inoperable.



- 11/19--Cpl stopped a tractor trailer for an equipment violation. The truck tractor was placed out of service as the axle 1 passenger side tire contacted another vehicle part when the wheel is turned.



- 11/19, Inspector stopped a truck hauling an excavator on Route 4 in Woodstock. The machine weighed over 10,000 pounds yet the boom was not secured to the deck. The truck had a non-manufactured hole in the brake can. The truck and trailer were placed out of service.



- 11/19, at the WRJ detail, Inspector placed a truck out of service for not enough tie downs for the length of dressed lumber. There was only 1 tie down for lumber that was over 10 feet long.



- 11/19, at the WRJ detail, Inspector placed a driver of an interstate box truck out of service for not having a valid driver's license. The driver also had no medical card.



- 11/20, Inspectors completed several school bus inspections at Butler Bus in White River Junction.
- 11/20--Cpl stopped a tractor trailer for an equipment violation. The truck tractor was placed out of service as an air hose had a hole in it, not a proper connection, and was leaking air when the service brakes were applied.



- 11/20--Cpl stopped a truck and trailer hauling a motor vehicle on Route 22a in Fair Haven for an inoperable brake lamp on the trailer. The trailer was placed out of service as the passenger side rear turn signal was inoperable.



- 11/21--Cpl stopped a truck tractor for operating in the dark with no working tail lamps. The inspection revealed the tail lamps were inoperable and the truck tractor was placed out of service.



- 11/21--Cpl stopped a tractor trailer driver for failing to pull into the open Fair Haven Scale House. The driver was placed out of service as his commercial driver's license was disqualified. He was also placed out of service for 10 hours off duty for having no record of duty status as required.



- 11/21--Cpl stopped the driver of a tractor trailer for failing to pull into the open Fair Haven Scale House. The carrier was found to be suspended in Vermont and was grounded until the suspension could be cleared.



- 11/21, Inspector stopped a truck and trailer on Route 4 in Fair Haven. The carrier failed to register for a USDOT number prior to beginning interstate operations. The driver had no medical card. The trailer was not registered nor was the emergency breakaway cable connected properly. The trailer was placed out of service.



- 11/21, Inspector stopped 5 commercial vehicles that failed to stop at the Fair Haven Weigh Station for inspection. Each was given a violation for failing to obey a traffic control device.



- 11/21, Inspector stopped a truck and trailer on Route 4 in Fair Haven for an expired trailer plate. The combination required a Class A CDL, the driver had a Class D and no medical card. The trailer was not registered and emergency breakaway cable not connected. Several other violations found. The carrier was issued several Vermont Civil Violation Complaints.



- 11/21, Inspector stopped a log truck on Route 4 in Fair Haven. The truck weighed 106,060 and was issued a Vermont Civil Violation Complaint for being over his allowed 99,000 pounds.



- 11/21--Cpl stopped the driver of a box truck for failing to pull into the open Fair Haven Scale House. The carrier was found to have an inactive US DOT number and was placed out of service.



- 11/21--Cpl stopped the driver of a truck in interstate commerce for failing to pull into the open Fair Haven Scale House. The truck was placed out of service as the parking brake was inoperable.



- 11/19- Insp stopped a CMV tractor/trailer for a load securement violation on I-89 in Williston. An inspection was conducted, and the trailer was placed Out of Service for not having enough tiedowns on the piece of machinery. The driver was issued a warning.



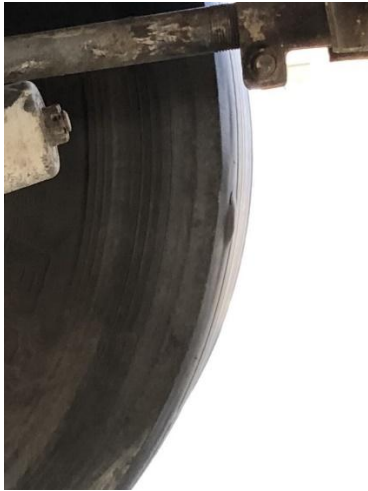
- 11/20-Insp stopped a CMV straight truck on I-89 in Sharon. An inspection was conducted, and the truck was placed Out of Service for having no operable turn signals or brake lamps. The Carrier also did not have a USDOT number and was making an interstate trip. The carrier was issued a ticket for the lighting violations.



- 11/20-Insp conducted terminal bus inspections in Hartford. One of the buses was placed out of service for having no operable turn signals.

HQ Sergeant:

- Sgt. inspected an interstate tractor trailer. The trailer was placed out of service for a visible bulge in the tire tread.



- Sgt. stopped an interstate box truck for a marking violation on I89 in Williston. The carrier was found to be under suspension in VT. The vehicle was grounded until the carrier was reinstated.



New Entrant:

